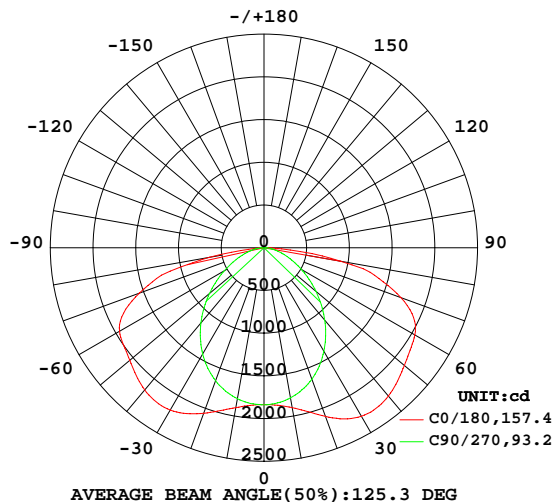


LUMINAIRE PHOTOMETRIC TEST REPORT

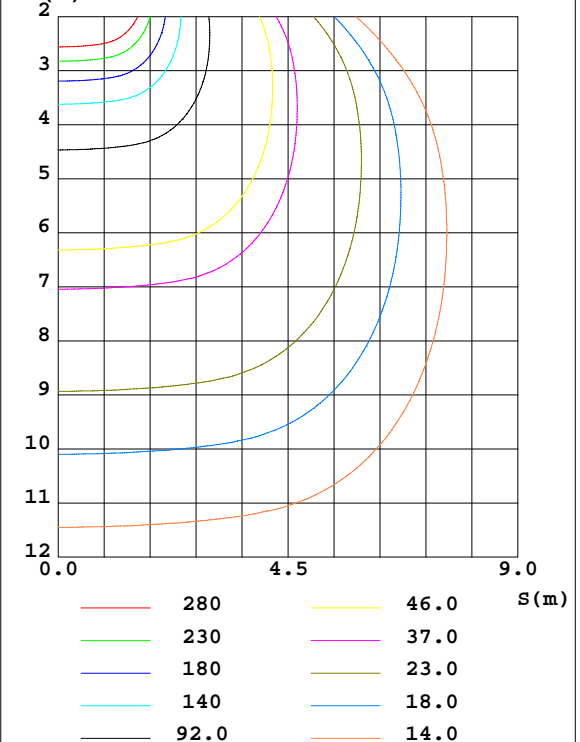
Test:U:229.78V I:0.3554A P:79.871W PF:0.9780 Freq:49.99Hz Lamp Flux:7780.78x1 lm		
NAME:	TYPE:	WEIGHT:
SPEC.:	DIM.: 1203*52*31	SERIAL No.:
MFR.:	SUR.:0.8*0.02	Shielding Angle:

DATA OF LAMP		PHOTOMETRIC DATA Eff: 97.42 lm/W			
MODEL		Imax(cd)	2294	S/MH(C0/180)	1.76
NOMINAL POWER(W)	80	LOR(%)	100.0	S/MH(C90/270)	1.17
RATED VOLTAGE(V)	230.0	TOTAL FLUX(lm)	7780.8	η UP,DN(C0-180)	0.0,49.8
NOMINAL FLUX(lm)	7780.78	CIE CLASS	DIRECT	η UP,DN(C180-360)	0.0,50.2
LAMPS INSIDE	1	η up(%)	0.0	CIBSE SHR NOM	1.50
TEST VOLTAGE(V)	230.0	η down(%)	100.0	CIBSE SHR MAX	1.55

LUMINOUS INTENSITY DISTRIBUTION DIAGRAM



C0 PLANE ISOLUX DIAGRAM (UNIT:lx)



C Range: 0 - 360DEG
C Interval: 22.5DEG
Test Speed: HIGH
Temperature:25.3DEG
Operators:
Test Date:2025-04-22

γ Range: 0 - 90DEG
 γ Interval: 1.0DEG
Test System:EVERFINE GO-2000A_V1 SYSTEM V2.0.406.10
Humidity:65.0%
Test Distance:11.700m [K=1.0000]
Remarks:

ZONAL FLUX DIAGRAM

ZONAL FLUX DIAGRAM:

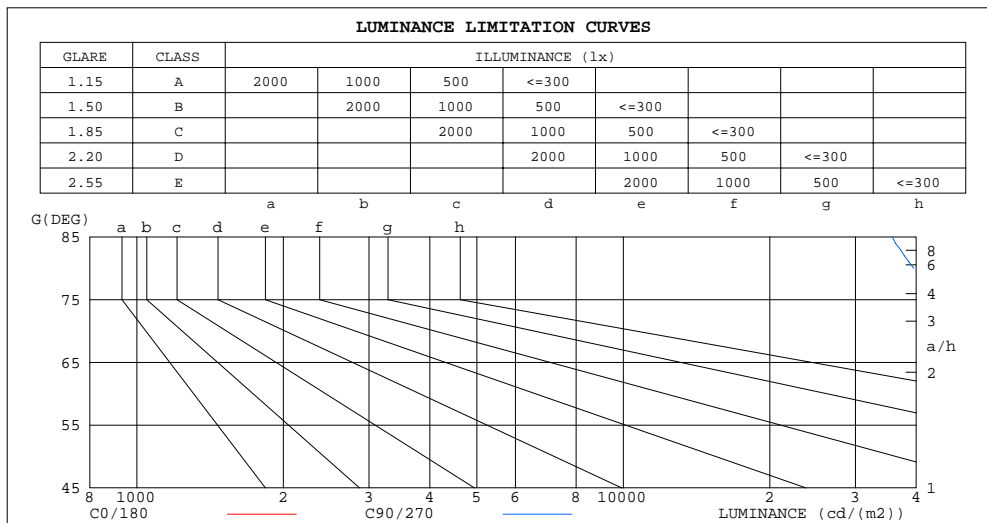
γ	C0	C45	C90	C135	C180	C225	C270	C315	γ	Φ zone	Φ total	$\%lum, lamp$
10	1900	1843	1784	1841	1901	1850	1795	1848	0- 10	175.8	175.8	2.26,2.26
20	2099	1871	1639	1856	2062	1878	1656	1875	10- 20	526.3	702.1	9.02,9.02
30	2277	1920	1402	1867	2193	1900	1436	1919	20- 30	865.2	1567	20.1,20.1
40	2265	1920	1107	1827	2173	1883	1148	1932	30- 40	1143	2711	34.8,34.8
50	2144	1796	794.6	1693	2050	1769	832.1	1828	40- 50	1299	4010	51.5,51.5
60	2038	1570	503.8	1463	1951	1541	533.3	1609	50- 60	1324	5334	68.5,68.5
70	1704	1292	272.4	1185	1549	1266	291.1	1324	60- 70	1226	6560	84.3,84.3
80	910.0	904.1	109.8	792.5	646.1	864.1	120.0	939.1	70- 80	920.1	7480	96.1,96.1
90	28.78	66.92	5.524	7.397	11.37	9.656	7.895	72.89	80- 90	300.9	7781	100,100
100									90-100			
110									100-110			
120									110-120			
130									120-130			
140									130-140			
150									140-150			
160									150-160			
170									160-170			
180									170-180			
DEG	LUMINOUS INTENSITY:cd									UNIT:lm		

C Range: 0 - 360DEG
C Interval: 22.5DEG
Test Speed: HIGH
Temperature:25.3DEG
Operators:
Test Date:2025-04-22

γ Range: 0 - 90DEG
 γ Interval: 1.0DEG
Test System:EVERFINE GO-2000A_V1 SYSTEM V2.0.406.10
Humidity:65.0%
Test Distance:11.700m [K=1.0000]
Remarks:

LUMINANCE LIMITATION CURVES

Test:U:229.78V I:0.3554A P:79.871W PF:0.9780 Freq:49.99Hz Lamp Flux:7780.78x1 lm		
NAME:	TYPE:	WEIGHT:
SPEC.:	DIM.: 1203*52*31	SERIAL No.:
MFR.:	SUR.:0.8*0.02	Shielding Angle:



LUMINANCE cd/(m2)		
G(DEG)	C0/180	C90/270
85	221519	35711
80	327513	39520
75	336544	44227
70	311404	49787
65	285546	56077
60	254808	62973
55	227628	70130
50	208515	77257
45	195357	84061

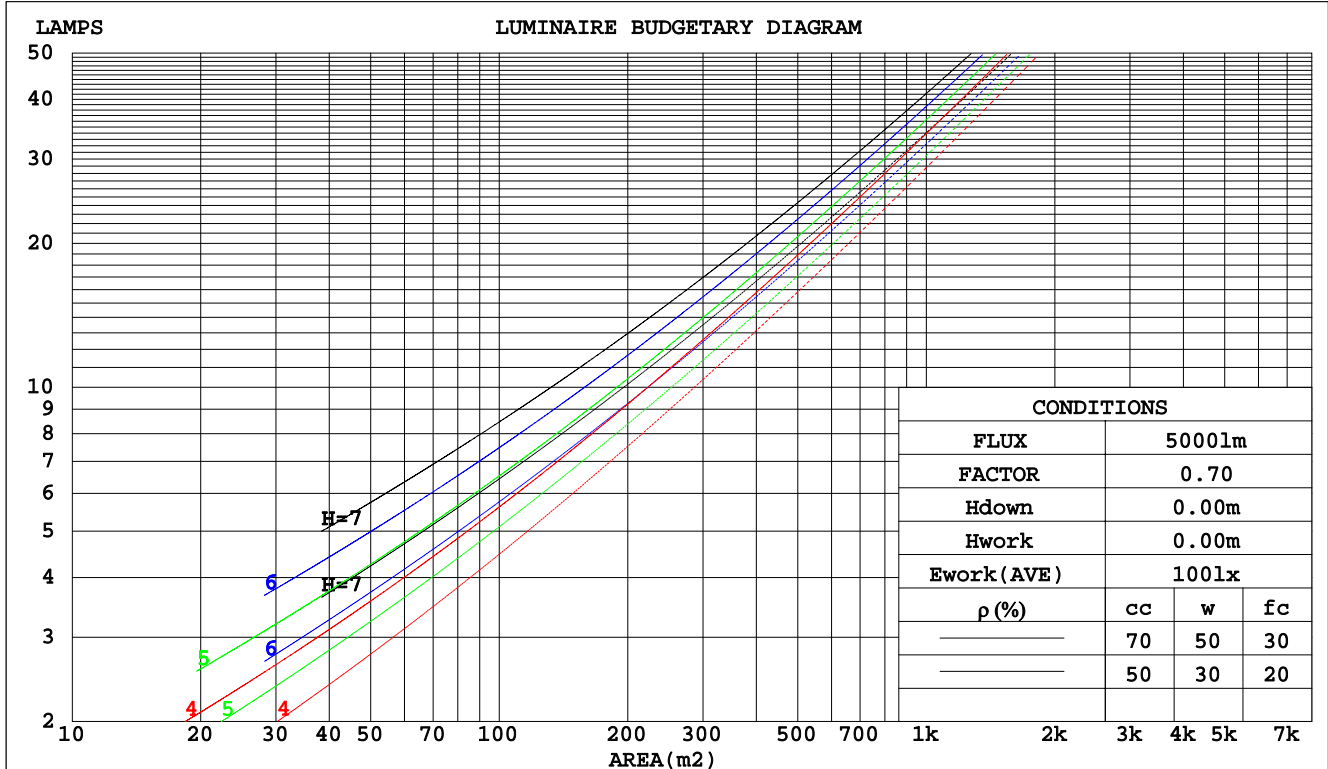
C Range: 0 - 360DEG
C Interval: 22.5DEG
Test Speed: HIGH
Temperature:25.3DEG
Operators:
Test Date:2025-04-22

γ Range: 0 - 90DEG
γ Interval: 1.0DEG
Test System:EVERFINE GO-2000A_V1 SYSTEM V2.0.406.10
Humidity:65.0%
Test Distance:11.700m [K=1.0000]
Remarks:

CU AND LUMINAIRE BUDGETARY ESTIMATE DIAGRAM

Test:U:229.78V I:0.3554A P:79.871W PF:0.9780 Freq:49.99Hz Lamp Flux:7780.78x1 lm		
NAME:	TYPE:	WEIGHT:
SPEC.:	DIM.: 1203*52*31	SERIAL No.:
MFR.:	SUR.:0.8*0.02	Shielding Angle:

pcc	80%			70%			50%			30%			10%			0
pw	50%	30%	10%	50%	30%	10%	50%	30%	10%	50%	30%	10%	50%	30%	10%	0
pfc	20%			20%			20%			20%			20%			0
RCR	RCR:Room Cavity Ratio						Coefficients of Utilization(CU)									
0.0	1.19	1.19	1.19	1.16	1.16	1.16	1.11	1.11	1.11	1.06	1.06	1.06	1.02	1.02	1.02	.00
1.0	1.01	.96	.91	.99	.94	.90	.94	.90	.87	.90	.87	.84	.86	.84	.82	.79
2.0	.86	.78	.71	.84	.77	.70	.80	.74	.69	.77	.72	.67	.74	.69	.66	.63
3.0	.74	.65	.57	.72	.64	.57	.69	.62	.56	.66	.60	.55	.64	.58	.54	.51
4.0	.65	.55	.47	.63	.54	.47	.61	.53	.46	.58	.51	.46	.56	.50	.45	.43
5.0	.57	.47	.40	.56	.47	.40	.54	.46	.39	.52	.45	.39	.50	.43	.38	.36
6.0	.51	.41	.34	.50	.41	.34	.48	.40	.34	.46	.39	.34	.45	.38	.33	.31
7.0	.46	.37	.30	.45	.36	.30	.44	.35	.30	.42	.35	.29	.41	.34	.29	.27
8.0	.42	.33	.26	.41	.32	.26	.40	.32	.26	.38	.31	.26	.37	.31	.26	.24
9.0	.38	.29	.23	.37	.29	.23	.36	.29	.23	.35	.28	.23	.34	.28	.23	.21
10.0	.35	.27	.21	.34	.26	.21	.33	.26	.21	.32	.26	.21	.32	.25	.21	.19



C Range: 0 - 360DEG
C Interval: 22.5DEG
Test Speed: HIGH
Temperature:25.3DEG
Operators:
Test Date:2025-04-22

γ Range: 0 - 90DEG
γ Interval: 1.0DEG
Test System:EVERFINE GO-2000A_V1 SYSTEM V2.0.406.10
Humidity:65.0%
Test Distance:11.700m [K=1.0000]
Remarks:

WEC AND CCEC

Test:U:229.78V I:0.3554A P:79.871W PF:0.9780 Freq:49.99Hz Lamp Flux:7780.78x1 lm								
NAME:			TYPE:			WEIGHT:		
SPEC.:			DIM.: 1203*52*31			SERIAL No.:		
MFR.:			SUR.:0.8*0.02			Shielding Angle:		

pcc	80%			70%			50%			30%			10%			0	
pw	50%	30%	10%	50%	30%	10%	50%	30%	10%	50%	30%	10%	50%	30%	10%	0	
pfc	20%			20%			20%			20%			20%			0	
RCR	RCR:Room Cavity Ratio						Wall Exitance Coefficients(WEC)										
0.0																	
1.0	.368	.209	.066	.360	.206	.065	.347	.199	.064	.334	.193	.062	.323	.187	.060		
2.0	.335	.184	.056	.329	.181	.056	.317	.176	.055	.306	.171	.054	.295	.167	.053		
3.0	.304	.162	.048	.298	.160	.048	.287	.156	.047	.277	.152	.047	.268	.148	.046		
4.0	.276	.143	.042	.271	.142	.042	.261	.138	.041	.252	.135	.041	.244	.133	.040		
5.0	.252	.128	.037	.247	.127	.037	.239	.124	.037	.231	.122	.036	.223	.119	.036		
6.0	.231	.116	.033	.227	.115	.033	.219	.112	.033	.212	.110	.032	.206	.108	.032		
7.0	.213	.105	.030	.210	.104	.030	.203	.103	.030	.197	.101	.029	.191	.099	.029		
8.0	.198	.097	.027	.195	.096	.027	.189	.094	.027	.183	.093	.027	.178	.091	.027		
9.0	.184	.089	.025	.181	.088	.025	.176	.087	.025	.171	.086	.025	.166	.084	.024		
10.0	.172	.083	.023	.170	.082	.023	.165	.081	.023	.160	.080	.023	.156	.079	.023		

pcc	80%			70%			50%			30%			10%			0	
pw	50%	30%	10%	50%	30%	10%	50%	30%	10%	50%	30%	10%	50%	30%	10%	0	
pfc	20%			20%			20%			20%			20%			0	
RCR	RCR:Room Cavity Ratio						Ceiling Cavity Exitance Coefficients(CCEC)										
0.0	.190	.190	.190	.163	.163	.163	.111	.111	.111	.064	.064	.064	.020	.020	.020		
1.0	.184	.156	.130	.158	.134	.112	.108	.092	.077	.062	.053	.045	.020	.017	.015		
2.0	.178	.132	.093	.152	.113	.080	.105	.078	.056	.060	.046	.033	.019	.015	.011		
3.0	.171	.115	.070	.147	.099	.060	.101	.069	.042	.058	.040	.025	.019	.013	.008		
4.0	.163	.102	.054	.140	.088	.047	.096	.061	.033	.056	.036	.020	.018	.012	.006		
5.0	.156	.091	.044	.134	.079	.038	.092	.055	.027	.053	.032	.016	.017	.011	.005		
6.0	.148	.083	.037	.127	.072	.032	.088	.050	.023	.051	.030	.013	.016	.010	.004		
7.0	.141	.076	.031	.121	.066	.027	.084	.046	.019	.049	.027	.011	.016	.009	.004		
8.0	.134	.071	.027	.115	.061	.024	.080	.043	.017	.046	.025	.010	.015	.008	.003		
9.0	.127	.066	.024	.110	.057	.021	.076	.040	.015	.044	.024	.009	.014	.008	.003		
10.0	.121	.061	.021	.105	.053	.019	.073	.037	.013	.042	.022	.008	.014	.007	.003		

C Range: 0 - 360DEG
C Interval: 22.5DEG
Test Speed: HIGH
Temperature:25.3DEG
Operators:
Test Date:2025-04-22

γ Range: 0 - 90DEG
γ Interval: 1.0DEG
Test System:EVERFINE GO-2000A_V1 SYSTEM V2.0.406.10
Humidity:65.0%
Test Distance:11.700m [K=1.0000]
Remarks:

UGR(Unified Glare Rating) Table

Test:U:229.78V I:0.3554A P:79.871W PF:0.9780 Freq:49.99Hz Lamp Flux:7780.78x1 lm											
NAME:			TYPE:			WEIGHT:					
SPEC.:			DIM.: 1203*52*31			SERIAL No.:					
MFR.:			SUR.:0.8*0.02			Shielding Angle:					
ceiling/cavity	0.7	0.7	0.5	0.5	0.3	0.7	0.7	0.5	0.5	0.3	
walls	0.5	0.3	0.5	0.3	0.3	0.5	0.3	0.5	0.3	0.3	
working plane	0.2	0.2	0.2	0.2	0.2	0.2	0.2	0.2	0.2	0.2	
Room dimensions		Viewed crosswise				Viewed endwise					
x = 2H y = 2H		33.0	34.7	33.3	34.9	35.1	27.8	29.5	28.1	29.7	29.9
	3H	35.8	37.4	36.1	37.6	37.8	28.8	30.3	29.1	30.6	30.8
	4H	37.0	38.5	37.4	38.8	39.1	29.1	30.6	29.4	30.8	31.1
	6H	38.1	39.5	38.4	39.8	40.1	29.3	30.7	29.7	31.0	31.3
	8H	38.4	39.7	38.7	40.0	40.3	29.4	30.7	29.7	31.0	31.3
	12H	38.5	39.8	38.9	40.1	40.4	29.4	30.7	29.8	31.0	31.3
4H	2H	33.6	35.1	33.9	35.3	35.6	30.2	31.7	30.5	32.0	32.2
	3H	36.6	37.9	37.0	38.2	38.6	31.5	32.8	31.8	33.1	33.4
	4H	38.1	39.3	38.5	39.6	40.0	31.9	33.1	32.3	33.4	33.8
	6H	39.3	40.4	39.7	40.8	41.1	32.2	33.3	32.6	33.6	34.0
	8H	39.7	40.7	40.1	41.1	41.5	32.3	33.3	32.7	33.7	34.0
	12H	39.9	40.8	40.3	41.2	41.6	32.3	33.3	32.8	33.6	34.1
8H	4H	38.4	39.4	38.8	39.8	40.2	33.8	34.8	34.2	35.2	35.6
	6H	39.9	40.7	40.3	41.1	41.6	34.5	35.3	34.9	35.7	36.2
	8H	40.4	41.2	40.9	41.6	42.0	34.7	35.4	35.1	35.9	36.3
	12H	40.7	41.4	41.2	41.8	42.3	34.8	35.4	35.3	35.9	36.4
12H	4H	38.4	39.3	38.8	39.7	40.1	34.2	35.2	34.7	35.6	36.0
	6H	40.0	40.7	40.5	41.2	41.6	35.2	36.0	35.7	36.4	36.9
	8H	40.6	41.2	41.1	41.7	42.2	35.6	36.2	36.1	36.7	37.2
Variations with the observer position at spacings:											
S = 1.0H	+ 0.1 / - 0.1					+ 0.1 / - 0.2					
1.5H	+ 0.1 / - 0.2					+ 0.2 / - 0.3					
2.0H	+ 0.2 / - 0.3					+ 0.4 / - 0.5					

CIE Pub.117, 7781 lm Total Lamp Luminous Flux Corrected ($8\log(F/F_0) = 7.1$)

C Range: 0 - 360DEG
 C Interval: 22.5DEG
 Test Speed: HIGH
 Temperature:25.3DEG
 Operators:
 Test Date:2025-04-22

γ Range: 0 - 90DEG
 γ Interval: 1.0DEG
 Test System:EVERFINE GO-2000A_V1 SYSTEM V2.0.406.10
 Humidity:65.0%
 Test Distance:11.700m [K=1.0000]
 Remarks:

UTILIZATION FACTORS TABLE

Test:U:229.78V I:0.3554A P:79.871W PF:0.9780 Freq:49.99Hz Lamp Flux:7780.78x1 lm		
NAME:	TYPE:	WEIGHT:
SPEC.:	DIM.: 1203*52*31	SERIAL No.:
MFR.:	SUR.:0.8*0.02	Shielding Angle:

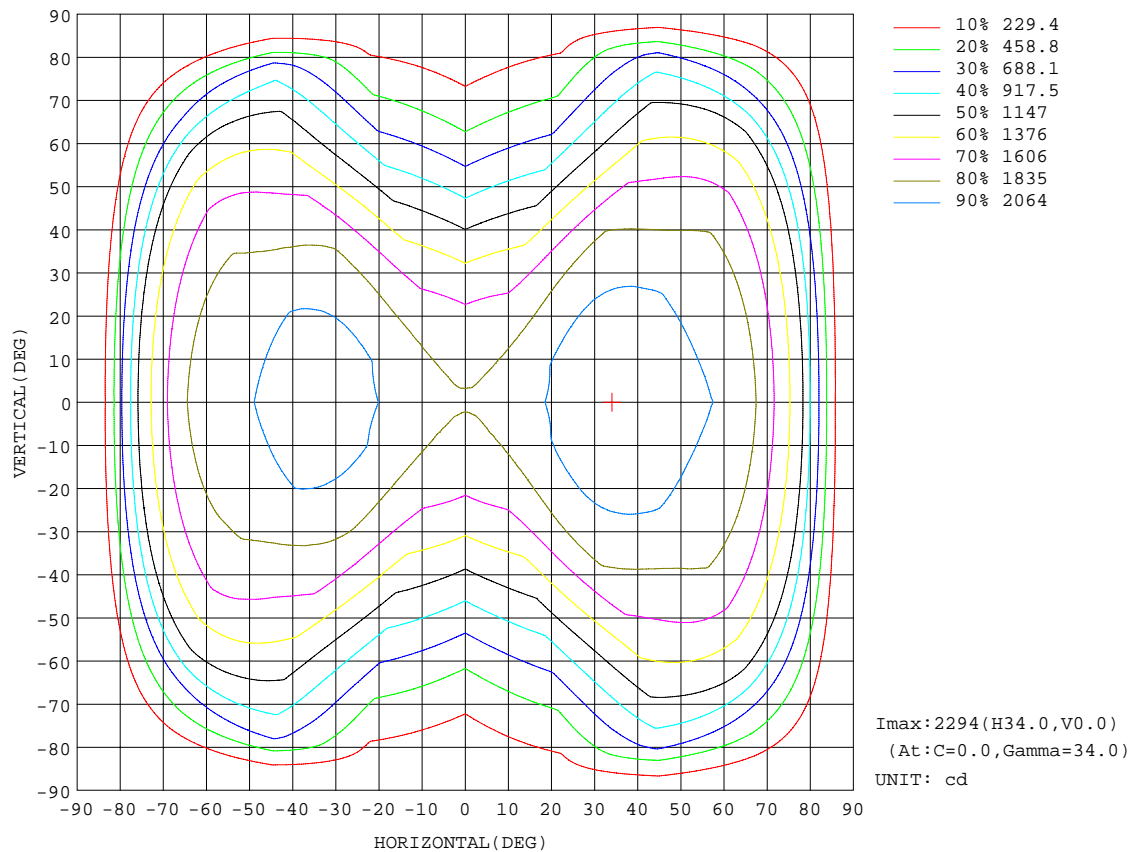
REFLECTANCE										
Ceiling	0.8	0.8	0.8	0.7	0.7	0.7	0.5	0.5	0.5	0
Walls	0.7	0.5	0.3	0.7	0.5	0.3	0.7	0.5	0.3	0
Working plane	0.2	0.2	0.2	0.2	0.2	0.2	0.2	0.2	0.2	0
ROOM INDEX	UTILIZATION FACTORS(PERCENT) $k(RI) \times RCR = 5$									
$k = 0.60$	52	40	32	51	39	32	50	39	32	25
0.80	62	49	41	61	49	41	59	48	40	33
1.00	70	58	50	69	57	49	67	59	49	41
1.25	78	66	57	76	65	57	73	63	56	48
1.50	83	72	63	81	71	63	78	69	62	53
2.00	90	80	73	89	79	72	85	77	71	62
2.50	95	86	79	93	84	78	89	82	76	67
3.00	99	91	84	97	89	83	92	86	81	72
4.00	104	97	91	101	95	90	97	91	87	78
5.00	106	101	96	104	99	94	99	95	91	81
ROOM INDEX	UF(total)									Direct
According to DIN EN 13032-2 2004			Suspended					SHRNOM = 1.25		

C Range: 0 - 360DEG
C Interval: 22.5DEG
Test Speed: HIGH
Temperature:25.3DEG
Operators:
Test Date:2025-04-22

γ Range: 0 - 90DEG
 γ Interval: 1.0DEG
Test System:EVERFINE GO-2000A_V1 SYSTEM V2.0.406.10
Humidity:65.0%
Test Distance:11.700m [K=1.0000]
Remarks:

ISOCANDELA DIAGRAM

Test:U:229.78V I:0.3554A P:79.871W PF:0.9780 Freq:49.99Hz Lamp Flux:7780.78x1 lm		
NAME:	TYPE:	WEIGHT:
SPEC.:	DIM.: 1203*52*31	SERIAL No.:
MFR.:	SUR.:0.8*0.02	Shielding Angle:

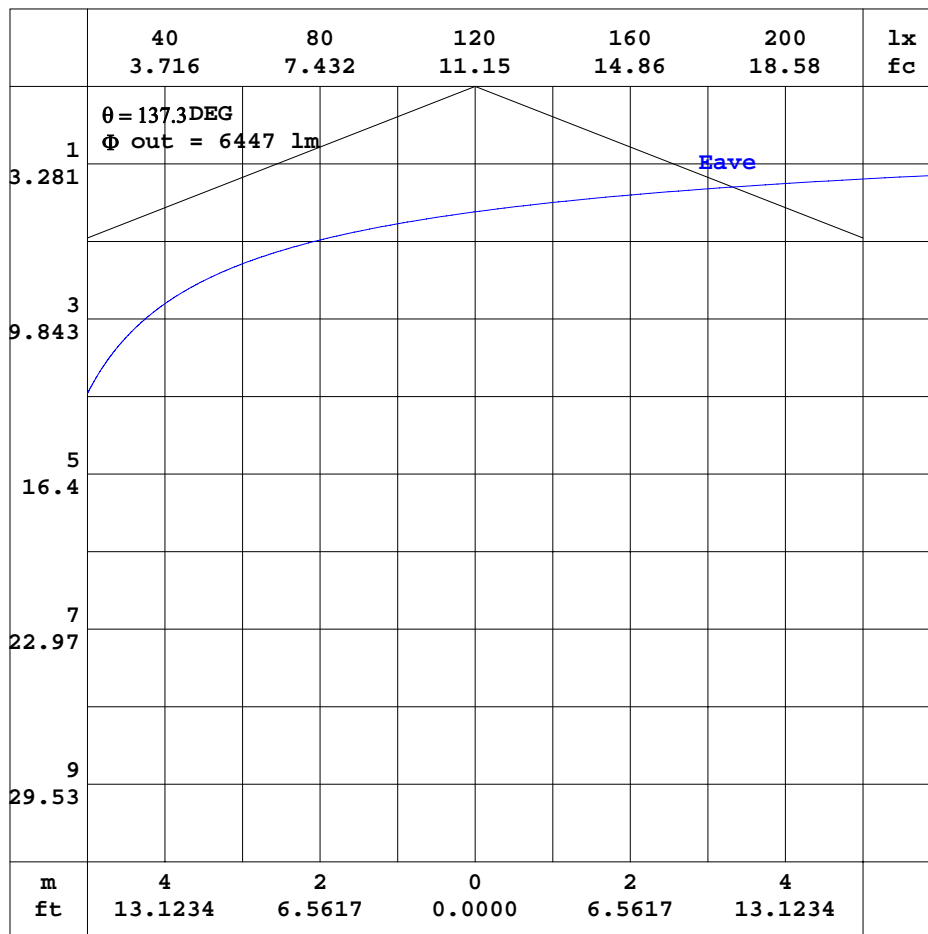


C Range: 0 - 360DEG
C Interval: 22.5DEG
Test Speed: HIGH
Temperature: 25.3DEG
Operators:
Test Date: 2025-04-22

γ Range: 0 - 90DEG
 γ Interval: 1.0DEG
Test System: EVERFINE GO-2000A_V1 SYSTEM V2.0.406.10
Humidity: 65.0%
Test Distance: 11.700m [K=1.0000]
Remarks:

AAI CURVES

Test:U:229.78V I:0.3554A P:79.871W PF:0.9780 Freq:49.99Hz Lamp Flux:7780.78x1 lm		
NAME:	TYPE:	WEIGHT:
SPEC.:	DIM.: 1203*52*31	SERIAL No.:
MFR.:	SUR.:0.8*0.02	Shielding Angle:



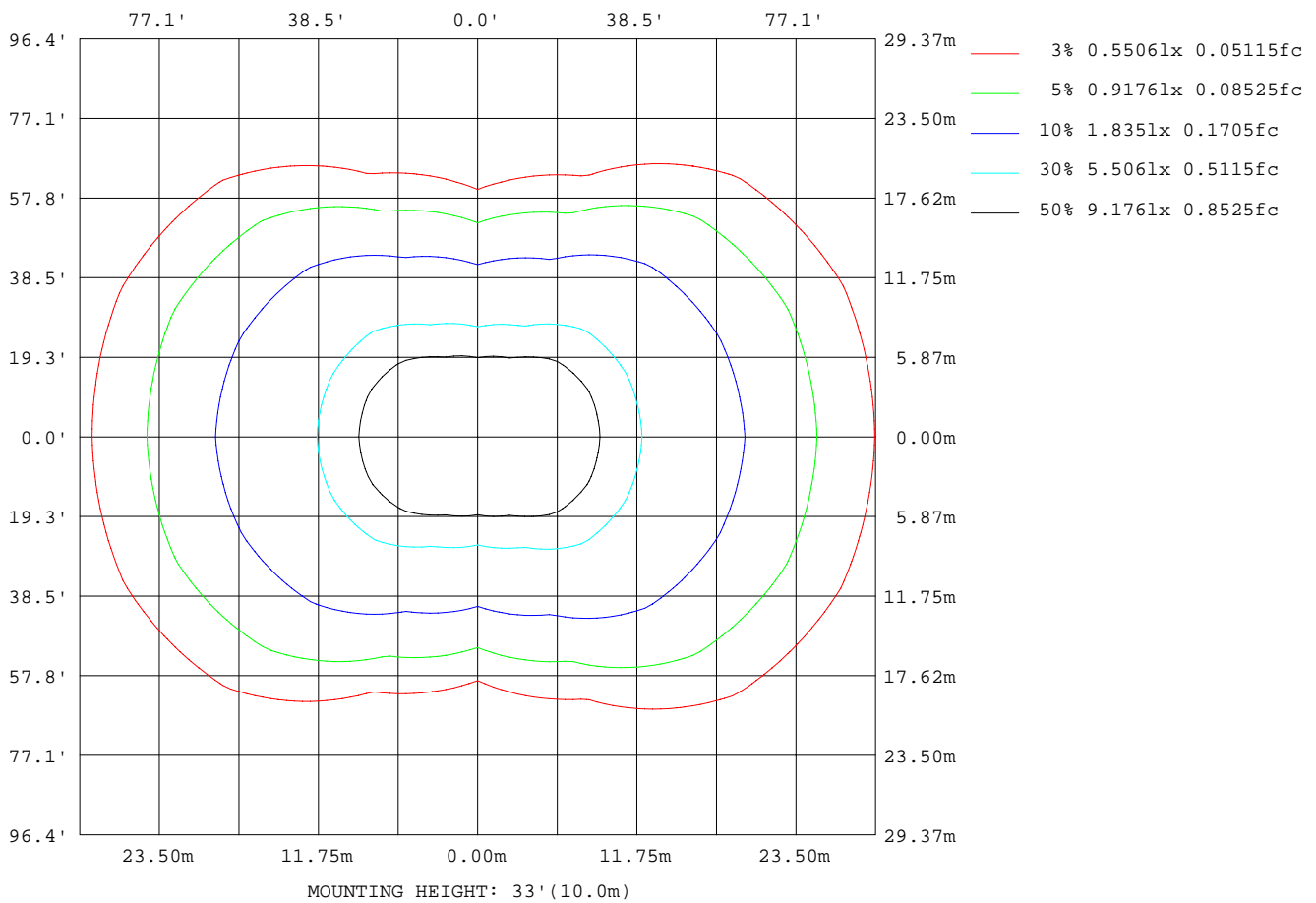
Note: The Curves indicate the illuminated area and the average illumination when the luminaire is at different distance.

C Range: 0 - 360DEG
C Interval: 22.5DEG
Test Speed: HIGH
Temperature: 25.3DEG
Operators:
Test Date: 2025-04-22

γ Range: 0 - 90DEG
 γ Interval: 1.0DEG
Test System: EVERFINE GO-2000A_V1 SYSTEM V2.0.406.10
Humidity: 65.0%
Test Distance: 11.700m [K=1.0000]
Remarks:

ISOLUX DIAGRAM

Test:U:229.78V I:0.3554A P:79.871W PF:0.9780 Freq:49.99Hz Lamp Flux:7780.78x1 lm		
NAME:	TYPE:	WEIGHT:
SPEC.:	DIM.: 1203*52*31	SERIAL No.:
MFR.:	SUR.:0.8*0.02	Shielding Angle:



C Range: 0 - 360DEG
C Interval: 22.5DEG
Test Speed: HIGH
Temperature:25.3DEG
Operators:
Test Date:2025-04-22

γ Range: 0 - 90DEG
 γ Interval: 1.0DEG
Test System:EVERFINE GO-2000A_V1 SYSTEM V2.0.406.10
Humidity:65.0%
Test Distance:11.700m [K=1.0000]
Remarks:

LED Avg.L Report

Test:U:229.78V I:0.3554A P:79.871W PF:0.9780 Freq:49.99Hz Lamp Flux:7780.78x1 lm		
NAME:	TYPE:	WEIGHT:
SPEC.:	DIM.: 1203*52*31	SERIAL No.:
MFR.:	SUR.:0.8*0.02	Shielding Angle:

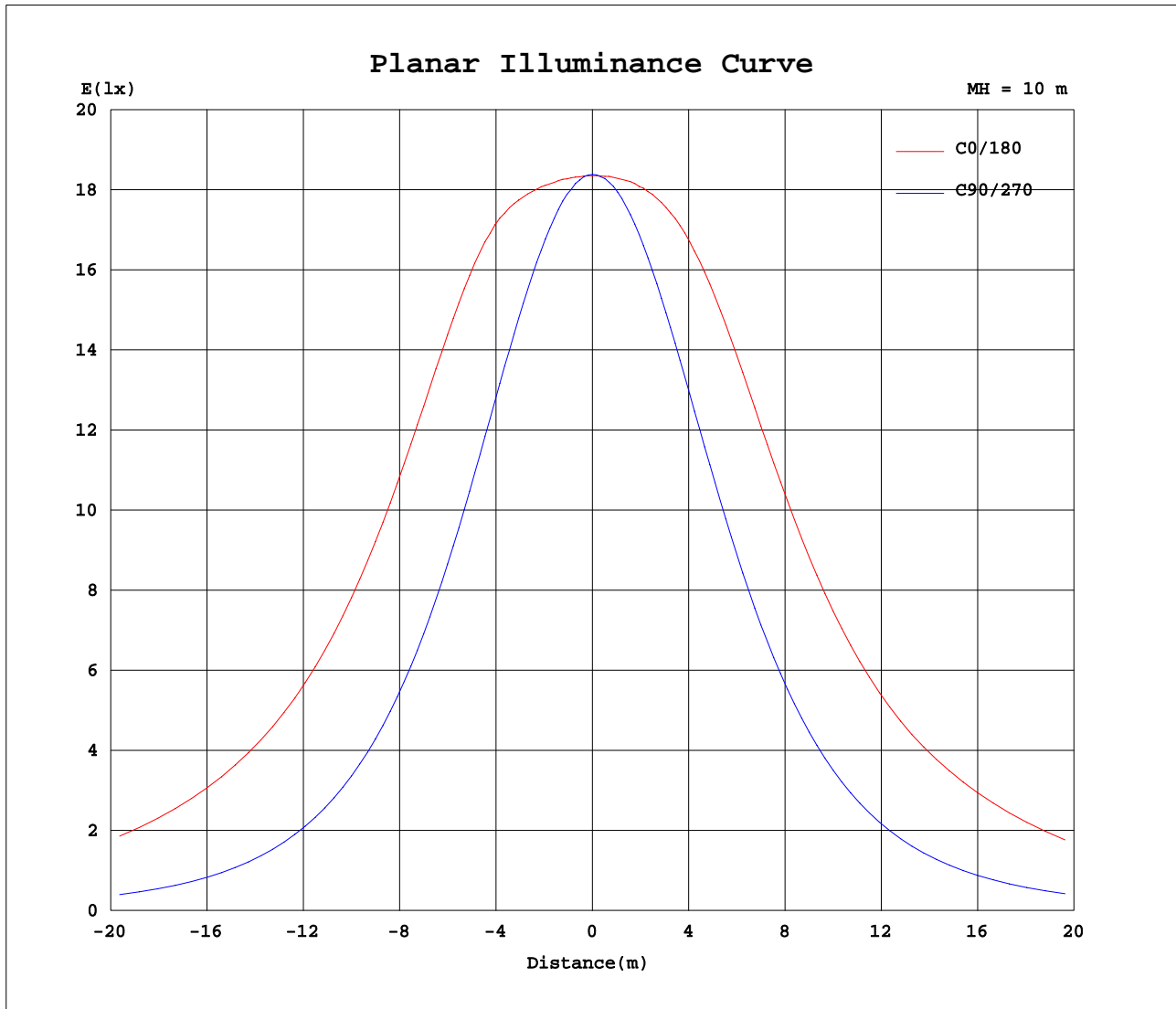
AvgL	cd/m2
L_0~180(65)av	276830
L_0~180(75)av	318164
L_0~180(85)av	152055
L_90~270(65)av	57752
L_90~270(75)av	46035
L_90~270(85)av	37971
L_45(65)av	208799
L_45(75)av	265251
L_45(85)av	287391

Standard: GB/T 29293-2012

C Range: 0 - 360DEG
C Interval: 22.5DEG
Test Speed: HIGH
Temperature:25.3DEG
Operators:
Test Date:2025-04-22

γ Range: 0 - 90DEG
γ Interval: 1.0DEG
Test System:EVERFINE GO-2000A_V1 SYSTEM V2.0.406.10
Humidity:65.0%
Test Distance:11.700m [K=1.0000]
Remarks:

Planar Illuminance Curve



C Range: 0 - 360DEG
C Interval: 22.5DEG
Test Speed: HIGH
Temperature: 25.3DEG
Operators:
Test Date: 2025-04-22

γ Range: 0 - 90DEG
 γ Interval: 1.0DEG
Test System: EVERFINE GO-2000A_V1 SYSTEM V2.0.406.10
Humidity: 65.0%
Test Distance: 11.700m [K=1.0000]
Remarks:

```

γ Range: 0 - 90DEG
γ Interval: 1.0DEG
Test System:EVERFINE GO-2000A_V1 SYSTEM V2.0.406.10
Humidity:65.0%
Test Distance:11.700m [K=1.0000]
Remarks:

```